

EVANGELISM THINK TANK

There is an active evangelism Think Tank in process studying the following research question: "How can the church be helped to restore sustained evangelistic growth?"

The Think Tank starts with the following understanding:

1. Decline in congregations: 12,963 (2006) to 12,447 (2012) = 486
2. Decline in adherents: 1,633,635 to 1,554,321=109,314.
3. Some congregations are growing but most are not growing through evangelistic efforts.
4. Some congregations are not growing or declining but hover around a comfortable plateau.

The decline in adherents is about 1.1% decline per year when the US population growth rate on average is 0.9%. This means we only nominally keep up with the expanding population in the base case, we are actually declining at the rate of 2.0% per year. This means in the popular unrealistic method of church growth, the church is functionally gone in 50 years.

The reason for this article is that this is not just important to some Think Tank, this is important to all of us. A dozen or so brothers in a Think Tank may or may not have the insight to know what we need to return to the evangelistic growth pattern which Jesus expects us to follow.

What is sure is that somewhere among the 1,554,321 current members of the church, someone has a good idea. Think Tanks cannot deal with having 1,554,321 members, and cannot deal well with 25 ideas which are each 50 pages long.

What this publication can guarantee is that if you are one of the 1,554,321 members who has an idea which might help and can say it on the equivalent of one page or less—it will be delivered to the Think Tank. The reason for the short length in addition to practicality for review is that if you cannot say your idea concisely, it must not be much of an idea.



EVANGELISM THINK TANK, P. 2

What is needed is “out of the box” but scriptural suggestions. MOTSH is not needed. That is “More Of The Same Harder”, and presumes that last year our brothers and sisters were not very sincere or hard working. It is generally the conclusion of this publication that some members of the church are overworked and tired while most are underworked and disengaged. The overworked members are generally the leaders (managers) who are too busy to manage and facilitate in engaging the rest of us.

All you need to do is to figure out why more members are not actively engaged in the work of the church and how to get them engaged. Few would question that if more members were actively engaged, it would be a boost to church growth.

The following are a few items which are not the reason (unless you might want to explain why they are):

1. Lack of education (we all know a lot more than they did on the day of Pentecost)
2. Lack of available time (Our members work 40 hours per week, in the first century they had to work more than that just to keep from starving)
3. Lack of general commitment (They are showing up on Sunday morning for some reason)
4. The need to hear one more sermon or Bible class before they are prepared (Pentecost was just one sermon)

It is probably a bit unfair to compare today with the day of Pentecost. On the day of Pentecost Jesus has just been resurrected and ascended and various miracles were happening. It is almost like Jesus’s life had been a 3 year sermon and the day of Pentecost was the invitation issued.

However, it is fair to compare the church today to the modern day churches of Christ, i.e. the 1950 church when it was one of the fastest growing religious groups. It is fair to compare the church today with Matthew 28:18-19 where we are told to take the gospel to all the world rather than sit in our pew and let someone else do our religion for us.

That being said, if you will e-mail a one page suggestion(s) to bbaugh@thearray.org, it will be delivered to the Think Tank for consideration. If you have the idea which will re-energize the churches of Christ evangelism, there is likely no more valuable use of you time than to communicate it.



THE CHRISTIAN CHRONICLE

Many of our congregations are almost like islands which are isolated from the majority of the brothers and sisters. We are instructed to be locally autonomous congregations, but keeping a reasonably consistent theme for Churches of Christ is quite a task, although staying with the scriptures is a big help.

A lot of effort has to go into providing the infrastructure background to connect our congregations. This publication attempts to fill that void, focusing on Impossible for Evolution (effectively proof of God), church growth and some doctrinal teachings.

Another publication that also attempts to connect the congregations is the *Christian Chronicle*, a monthly publication. It is not a teaching or doctrinal publication but contains 30 pages of current news about Christians and congregations all over the world.

Nearly 225 thousand readers receive are subscribers. The *Chronicle* also has a website at www.christianchronicle.org. For only \$20, anyone can sign up for a lifetime subscription.

The Christian Chronicle is almost as it claims, "not a teaching or doctrinal publication". The reason this is called "almost" right, in that the choice of news and who the Chronicle ultimately doesn't write about tends to reinforce the basic teachings of the churches of Christ. That is not direct teaching, but it is certainly teaching and the Christian Chronicle does a great job of it. If your congregation is pressured by some members who want to pursue liberal tendencies, you can be reinforced knowing that you

are not alone in staying with the scriptures. The Christian Chronicle teaches on a monthly basis that there are faithful congregations all over the world.

Although we attend a large congregation in Houston, a large city, if it were not for the Christian Chronicle our members would feel largely isolated from our brethren around the world. One can only imagine if this is true in large congregations in large metropolitan areas, how much more true it is for the only small congregation in a small city or town.

The mission statement of the Christian Chronicle is "to inform, inspire, and unite". This is precisely what they do. They inform through church news, church related advertisements, calendars of events, book reviews, opinion articles, and member's letters. Their teachings of what other are accomplishing certainly inspires others to know that with the help of God they can do it also. As indicated above they unite by telling what good and faithful congregations are doing.

If you do not currently receive the Christian Chronicle, we would recommend that you contact them on their website, www.christianchronicle.org, and begin to take advantage of this tremendous resource.

IMPOSSIBLE FOR EVOLUTION—CILIA

Asexual reproduction is fantastically complex. Just for starters the DNA in each cell has been compared to a church auditorium full of microphone cords which untangle and divide to reproduce. Then it gets complex.

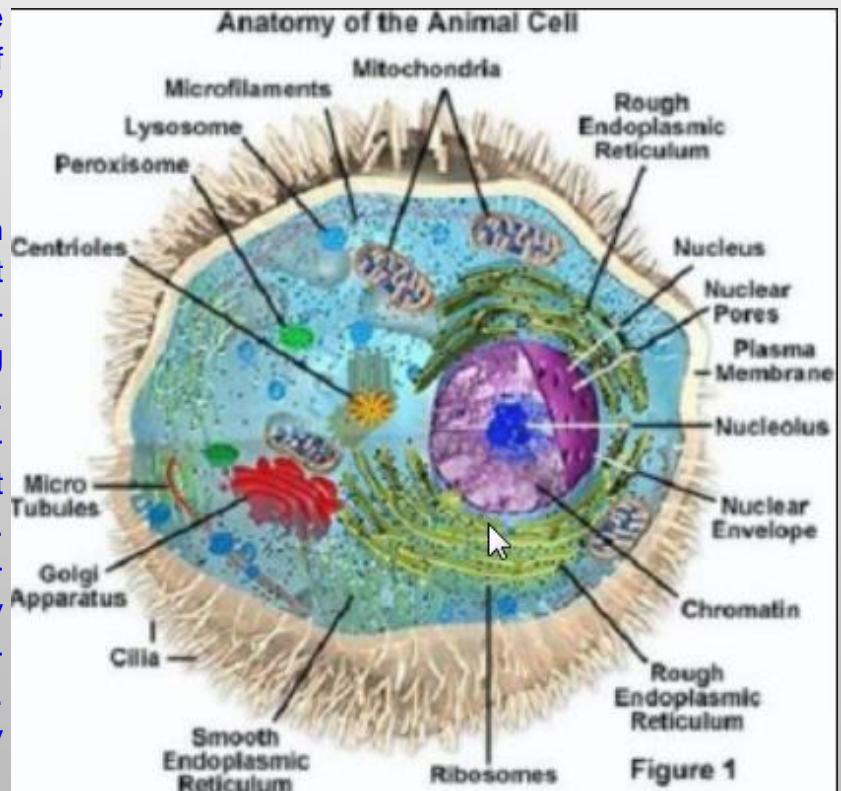
About the only thing which might make asexual reproduction seem simple is bi-sexual reproduction. It involves all the complexity of asexual reproduction, plus the DNA from 2 distinctly different cells (a sperm and an egg) must get together to form a new person. The new person will be a combination of the characteristics of the two “parent” cells.

The next impossibles associated with this are the several things which must happen to place the male sperm within 13-15 cm (5.5”) from the female egg in the fallopian tubes (human size). We all know what these are, God wasn’t embarrassed to create them, but it is not practical for us to discuss them. This represents several major creations which had to happen and be fully developed at the same time or the bi-sexual reproduction cannot happen. Impossible as these may seem, they are not the subject of this article.

Once the sperm is placed 13-15 cm (5.5”) from the egg, it must get to the egg to fertilize it or reproduction doesn’t happen. The sperm is just a single cell. In movies on this subject they look like little tadpoles swimming up-

stream. Again, this is a single cell. No eyes, no nose, no feet, no hands, no radar - just a cell. How does it know where to go and how does it get there.

A Googled article says “The mechanisms that guide the sperm cells to the oocyte (egg) have not been researched in all their facets.” That is code for they don’t have a clue. Whatever the guidance system is which makes this happen is not the subject of this article.



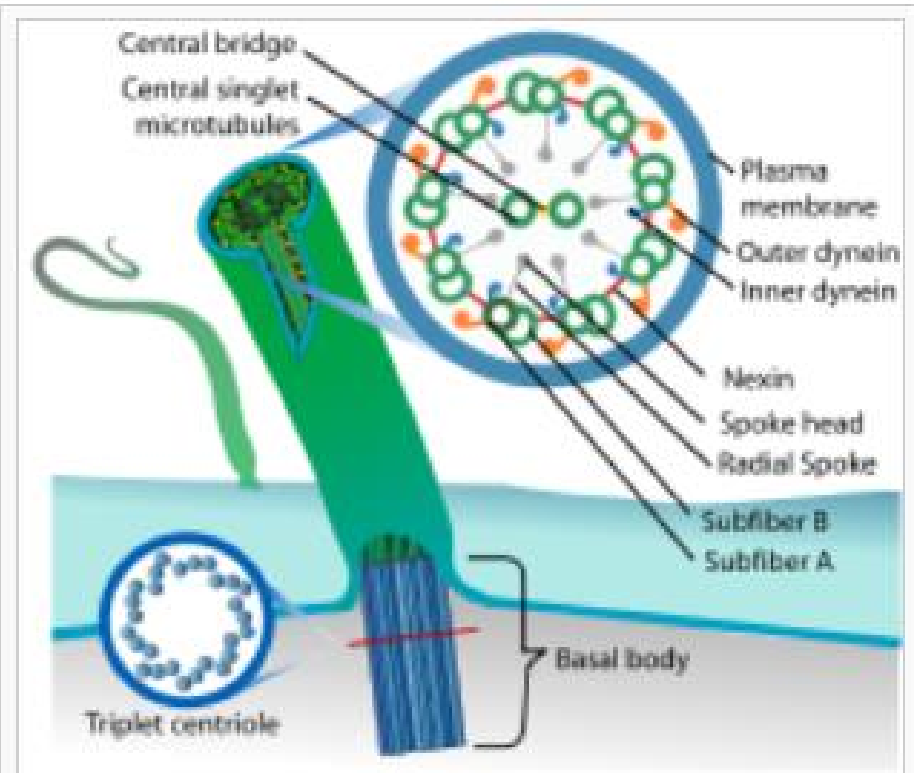
Now for the actual subject of this article:

Notice in the lower left hand corner of this diagram of a cell (supposedly created by lightning striking a primordial brew) the word Cilia identifying some “hairs” on the cell. That is what this article is about.

IMPOSSIBLE FOR EVOLUTION—CILIA

Quoting from page 250 of [The Case for a Creator](#) describing the action of the Cilia: "There are nine pairs of microtubules, which are long, thin, flexible rods, which encircle two single microtubules. The outer microtubules are connected to each other by what are called nexin linkers. And each microtubule has a motor protein called dynein. The motor protein attaches to one microtubule and has an arm that reaches over, grabs another one, and pushes it down. So the two rods start to slide lengthwise with respect to each other. As they start to slide, the nexin linkers, which were originally like loose rope, get stretched and become taut. As the dynein pushed farther and farther, it starts to bend the apparatus; then it pushed the other way and bends it back. That's how you get the rowing motion of the cilium."

In simpler words, the Cilia are the rowing oars which move the sperm 5.5" to the egg. Just that the Cilia hairs move back and forth is an astounding creation. Add to this that if they simply move back and forth, the cell simply aimlessly wiggles. The Cilia are given instructions such that they wiggle in a specific pattern to cause movement. They don't get to evolve a pattern of motion over a million years. If the



Eukaryotic motile cilium

first group doesn't row right, the sperm simply dies.

Add to this that in the pitch blackness of the inside of the female body they must know where they are going. They don't get to send scouting parties out and draw maps for others to follow. They get it right the first time or they die. If at least one of them doesn't get it right every time, there is no pregnancy.

Reproduction is simply one impossibility after another unless you have an intelligent designer. That intelligent designer is Jehovah.

BROWSERS ARE WELCOME

Come when you can. Come every time you can! We'll be here. We'll be early so we can welcome you and we'll stay late so we can visit with you. We will start on time and try to finish in a timely manner.

You can sit on the back pew, or come right on up front. Polish that pew anywhere you want to. Bring your kids and we will love on them too. We will prepare the very best Bible classes possible and give your children our very best efforts. We want your children to love God and obey Jesus Christ.

If you have problems or a crisis in your family, just let us know. We are here to serve you. We want to minister to your needs. Do you need prayer, please let us pray for you.

Just keep in mind that our every waking hour is spent trying to turn you into a consumer of the gospel instead of a browser. We'll do everything we can to teach you about the saving grace of Jesus. We want you to believe his message and follow his way. We have everything ready for your baptism any time.

If you are browsing for a church home, take your time. We will be for you when the time comes. If you had a difficult experience in another church, please give us a chance to help your recover and thrive. Don't think we are scolding when we become insistent about your salvation. It's just that we love you and know the fragility of life. We want you to be saved and live in a loving family.

Please know that you are welcome here, come as you are and grow with us.

Elizabeth Brown

THE BASIC PREMISE OF THE CHURCHES OF CHRIST IS THAT:

- 1. ALL CHRISTIAN REVELATION WAS GIVEN IN THE FIRST CENTURY, &**
- 2. FIRST CENTURY REVELATION INCLUDES SOME INSTRUCTIONS WHICH ARE NOT OPTIONAL TO IGNORE.**

ANOTHER WAY TO SAY THIS IS "SPEAK WHERE THE BIBLE SPEAKS, AND REMAIN SILENT WHERE THE BIBLE IS SILENT".

ANOTHER WAY TO SAY THIS IS REV. 22: 18-19: ¹⁸ I warn everyone who hears the words of the prophecy of this book: If anyone adds anything to them, God will add to him the plagues described in this book. ¹⁹ And if anyone takes words away from this book of prophecy, God will take away from him his share in the tree of life and in the holy city, which are described in this book.

The old law tells us of the seriousness of God's judgment.

The new law tells of God's expectations of us today.

The church of Christ attempts to follow God's instructions rather than contemporary preferences to be sure you will be pleasing to God on judgment day.

Would you want to be anyplace else?

All we need to do is to effectively communicate that.

THE CHRISTIAN ARRAY

AN E-MAGAZINE DEDICATED TO SUSTAINED SCRIPTURAL CHURCH GROWTH IN OUR GENERATION

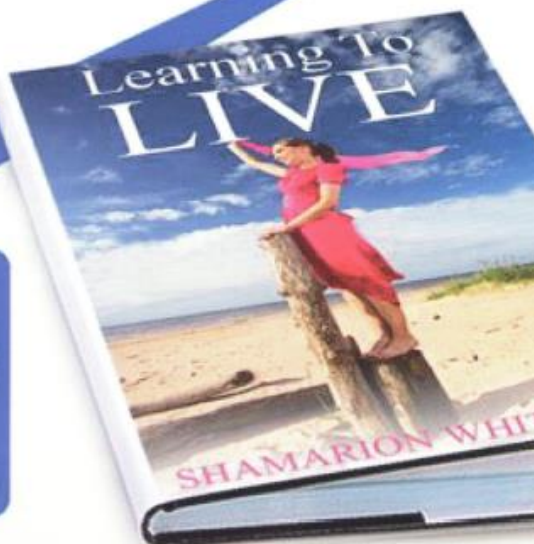
C	1	2	3	4
1				
2				
3				
4				



*Shamarion
Whitaker*

“One of the best inspirational books of the year!”

**Dr. Dorethea Davis,
Little Rock, AR**



You've heard the saying, "You live and learn!" That's what Learning to Live is all about; learning and living life's lessons. Shamarion Whitaker writes in a personal, conversational style that will immediately win you over as she empowers and motivates you to make positive changes in your life. Whether you're looking to put your life back together, or simply see life from a different perspective, Learning to Live holds the inspiration.

**There's Something in it For You.
Get Your Copy Today!!**

Host a Learning to Live Workshop.

Select a chapter and Shamarion will come and empower your audience with a Learning to Live workshop! Call for details.

Learning to Live Table of Contents

1. Understand Your Weaknesses
2. Pray About Everything
3. Recognize It's Not All About You
4. Learn to Forgive
5. Don't Sweat the Small Stuff
6. Face Your Fears
7. Live From the Inside Out
8. Be a Peacemaker
9. Make Peace With Perfection
10. Be Flexible
11. Be an In-law, Not an Out-law
12. Weather the Storms of Life
13. Be a Virtuous Woman
14. Take Off the Mask
15. Take Responsibility
16. Know When to Let go
17. Learn How to Fly

P.O. Box 924992
Houston, Texas 77292
281-414-8416

email: info@shamarionwhitaker.com

website: www.shamarionwhitaker.com

blog: www.shamarionfillyawwhitaker.blogspot.com

Available at barnesandnoble.com and other online booksellers. Also available at:

Barnes and Noble Bookstore

5303 FM 1960 West
Houston, Texas 77069

Blue Willow Bookshop

14532 Memorial Drive
Houston, Texas 77079

*Member of the Church of Christ in Highland Heights
Houston, Texas*

Foster's Home for Children

*"More than a home,
A sanctuary."*

Placement applications accepted.
Employment applications welcome.
Applications and donations available online
at

www.fostershome.org
Stephenville, Texas

FAILING A TEST WITH DIGNITY

What is the meaning of the word 'varicose'?

Close by

MISSION WEBSITE

This mission website of the Upper Valley church of Christ, Quechee, FT is <https://sites.google.com/site/themountainlight/Home/what-s-new>

DO
YOU
BELIEVE
THE
BIBLE?

The Bible says all revelation was given in the first century (Rev. 22:18-19)

If your religious group teaches something else, you might like to visit your local Church of Christ.

The Churches of Christ attempt to speak where the Bible Speaks and remain silent where the Bible is silent. (Rev. 22:18-19)

Quotable Quotes

There is no conflict between science and God, only between Scientist and Religionist—John Clayton

Sound Doctrine Books by

M.A.R. Spinks

ABIDING IN THE DOCTRINE OF CHRIST

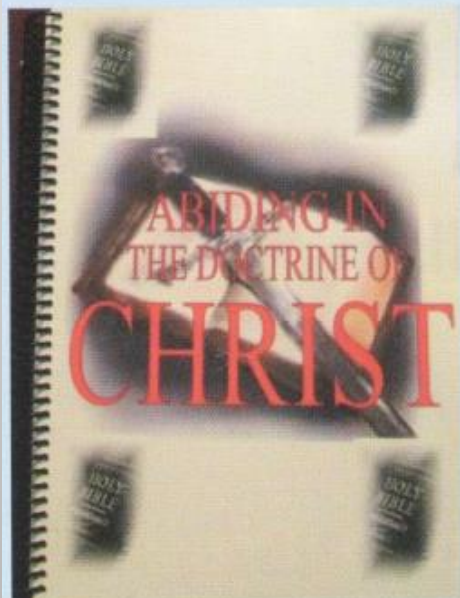
Books:

Abiding in the Doctrine of Christ - \$35

The Ministry of Reconciliation - \$20

Sound Doctrinal Bible Lessons...

- *Scriptural Bible Class Lessons...*
- *Help Gospel Preachers to improve their knowledge of Christ's doctrine...*
- *Great information for teaching new converts...*
- *Great outlines for Soul-winning/evangelism...*
- *Great study material to help individuals understand the Holy Bible...*



Send payment (check or money order)

Payable to: Anopawuia Spinks

Allow 5-10 business days for delivery.

Email: reidspinks@yahoo.com

Reid-Spinks Publishing

1503 Wipprecht Street

Houston, TX 77020

Material personally endorsed by Dr. Jack Evans, Sr. (June 2012)

"I applaud you for publishing a very qualitative, informative, refreshing and True-to-The Book document....your ides are cogent, clear, and easy for truth seekers to understand."

WHAT THE CHURCH OF CHRIST IS NOT

A local group of Christians who believe that the Bible can be updated by contemporary council decisions.

A church which receives the permission from an earthly headquarters to plant a new congregation.

A church which attempts to duplicate a 19th or 20th century pattern for a church.

A church which believes you can pick and choose what part of the Bible you want to believe and follow only those parts.

A church which believes that we should judge that we are all in a community of believers as long as we say we believe in Jesus, irrespective of what we do and preach. A church which should assure all others that they are saved.

A group who makes decisions based on popularity rather than scriptural basis.

A group which simply skips over Acts 2:38.

A group which finds more convenient ways to simulate baptism.

A group which votes on what it suits them to believe and preach or a group which believes that they are still getting direct revelations from God.

A group who believes we are here to entertain ourselves.

For those bound & determined to change the church of Christ to be the Christian Church, wouldn't it be easier to simply join the Christian Church.? Is the problem that your conscience won't allow you to join the Christian Church, but if you can reduce the church of Christ to being the Christian Church you will not offend your conscience?

WHAT THE CHURCH OF CHRIST IS

The church of Christ is a local group of Christians which try to speak where the Bible speaks and remain silent where the Bible is silent.

The church of Christ tries to reestablish the first century pattern and teaching of the New Testament era at each location.

The church of Christ tries to reestablish the scriptural organization of the church at each location.

The church of Christ has members who believe they are following the scriptural teachings as best they can.

Church of Christ members believe that we should not judge others' eternal reward, but that it is not reasonable to give comfort to others who follow their own preferences rather than teachings of the Bible.

A non-instrumental body as instruments were available in the first century and not used, and not used for several centuries.

A group who teaches Acts 2:38.

A group which teaches baptism by immersion for the remission of sins as that is what is taught in the Bible.

A group which believes all revelation was given in the first century.

A group which believes we are responsible to take the Gospel to the world.

MISSIONARY WORK IN INDIA

Kirk Picker, minister at the Grace Chapel Church of Christ in Cumming, GA, gave an inspirational presentation on 12/3 on the amazing amount of missionary work which can be done in India for relatively limited funds. This can be a wonderful way for you to participate personally or congregationally in "taking the gospel to all the world"!

God opens doors of opportunity...



God's people respond with generosity!

INDIA WISH LIST

LOCAL CHURCH NEEDS	COST	AMOUNT	TOTAL
Telegu Song Books	\$2	2,000	\$4,000
Telegu Bibles	\$3	1,000	\$3,000
Telegu Sunday School materials for children	\$5	200	\$1,000
Books for WINGS Bible School Library	\$25	200	\$5,000
Telegu Bible Concordance	\$100	25	\$2,500
Communion plates (bread and juice - set of 4; 2 of each)	\$100	20	\$2,000
Widow's support in villages (Food & Cloths - \$20 per month - \$240 annually)	\$240	100	\$24,000
Lepers: Food, cloths, and medical supplies (\$25 per month - \$300 annually)	\$300	200	\$60,000
Student Preacher Support (2 year study - \$30 per month - \$360 annually)	\$360	50	\$18,000
Construction of Baptistery at existing church building	\$400	10	\$4,000
Surgery for poor church members (e.g. eye surgery, broken bones etc.)	\$500	10	\$5,000
Preachers financial support (\$100 per month - \$1,200 annually)	\$1,200	25	\$30,000
Motorcycles for preachers	\$1,500	10	\$15,000
Library for WINGS Bible School Construction	\$2,000	1	\$2,000
Establish 2 nd preachers school in W.G. District, Initial set-up costs.	\$3,000	1	\$3,000
Establish 2 nd preachers school in W.G. District - Annual Operational costs.	\$9,000	1	\$9,000
Construction of local church building with baptistery	\$20,000	8	\$160,000
TOTAL			\$347,500

Make checks payable to:
 Grace Chapel Church of Christ
 6755 Majors Rd.
 Cumming, GA 30040

For more information contact Kurt Picker
 Email: kpicker@gmail.com
 Cell: 678-852-3201

THE CHRISTIAN ARRAY

AN E-MAGAZINE DEDICATED TO SUSTAINED SCRIPTURAL CHURCH GROWTH IN OUR GENERATION

C	1	2	3	4
1				
2				
3				
4				

AREA WIDE ACTIVITIES

7/28-8/2 Jersey Village Preacher Training Camp (Daryl@jvcoc.org or 832-237-7550)

2nd Tues. Houston Area Preacher's Luncheon, confirm with Dale Foster at dalefost@gmail.com for address.

December Annual Sacred Harp Singing

5/22/14 Foster's Home For Children Golf Tournament, Blackhorse

Aug 2014 Area Wide Campaign for Christ

YAHOO GROUP

HoustonCofC is a Yahoo group hosted by Steve Sandifer [steve.sandifer@sbcglobal.net] for the purpose of communicating Houston area news among the brethren. It is open to any member of the church at no cost.

The Christian Array Newsletter

This newsletter will be sent to members of the church on a monthly basis as an attempt to promote scriptural teachings, area wide activities and church growth. If you do not want to receive this newsletter, send an e-mail to info@thearray.org and it will be stopped.

If you know of anyone who would like to receive this newsletter, send their e-mail addresses to info@thearray.org. All past copies of the newsletter can be found on the website "thearray.org".

E-MAIL ADDRESSES

A goal of this newsletter is to develop a mailing list of as many members of the church as possible and to communicate church related information to as many members as possible. In that light, we would appreciate:

1. Your forwarding the church member e-mail addresses which you have.
2. Sending the directory of the congregation you attend or any other directories which you might have.
3. Give us an idea of how to collect church member e-mail addresses.

The Christian Array is dedicated to support the sustained scriptural growth of the churches of Christ. It is published by BCE Publications, a 501(c)(3) organization with Benton F. Baugh, Ph.D., P.E. as editor. BCE is solely responsible for the content. Any announcements, requests for publication, or comments should be e-mailed to info@thearray.org.